

TP-RFX

Outdoor RF Spectrum Analyzer
15-2700 MHz



TELEPROJECT
MISSION CRITICAL COMMUNICATIONS

What is TP-RFX

TP-RFX is an outdoor RF spectrum analyzer, it can analyze any frequencies from 15 MHz up to 2700 MHz.

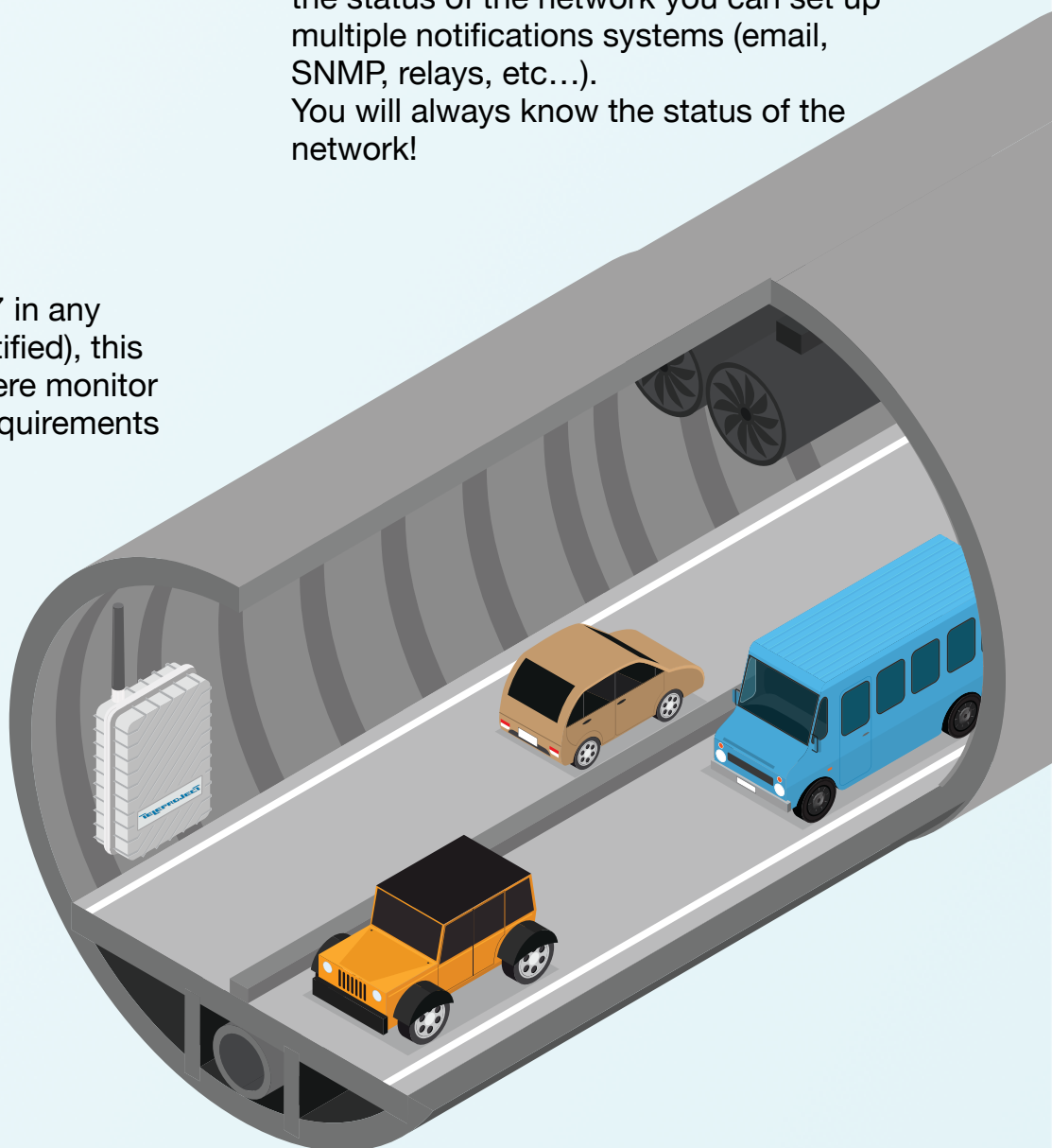
Main functionality:

Analyze fixed carrier frequency like TETRA, PMR, DMR, LoRa, WiFi (i.e. smart road), FM, DAB, and many more...

With a real-time dashboard, other than see the status of the network you can set up multiple notifications systems (email, SNMP, relays, etc...). You will always know the status of the network!

Why is so powerful:

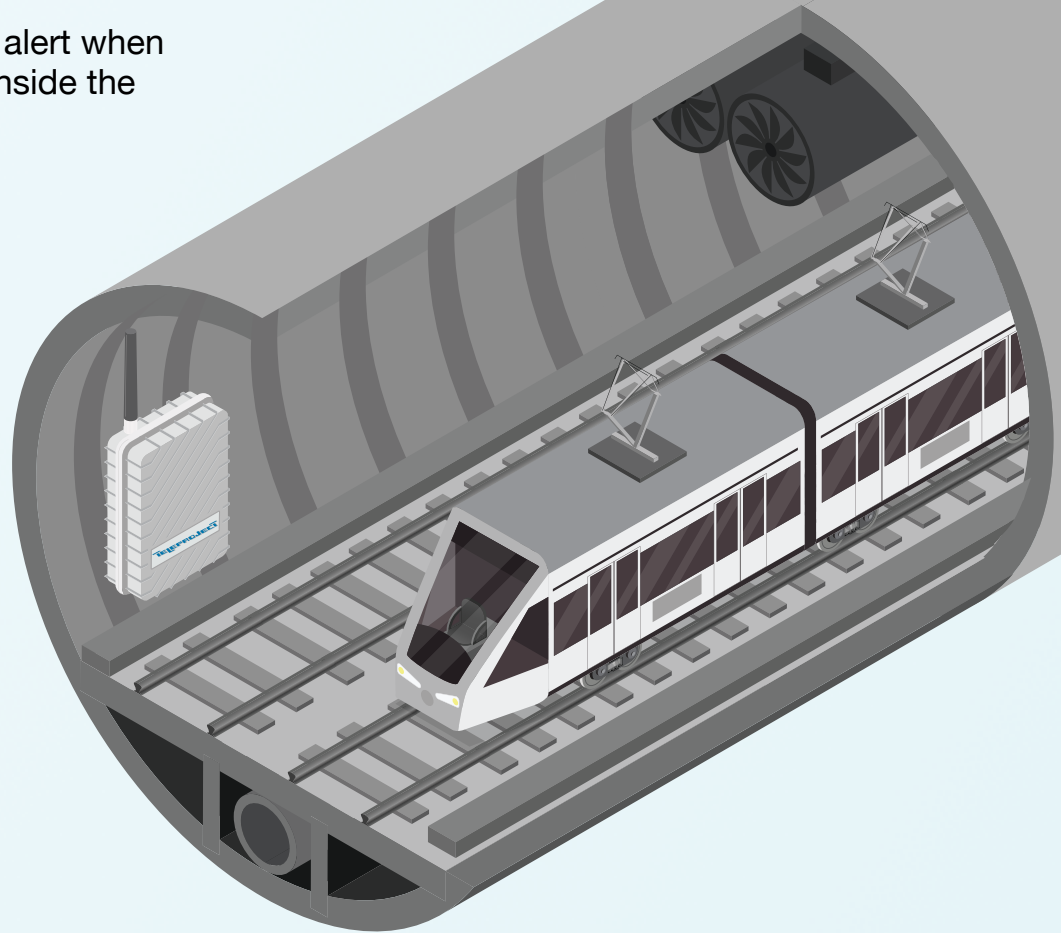
TP-RFX is able to work 24/7 in any outdoor condition (IP67 certified), this is really useful in places where monitor certain carrier is a critical requirements in emergency situations.




Typical Applications:

We have installed inside road-train tunnels to analyze TETRA carriers.

The technicians will get an alert when there are no more signals inside the tunnel.



 PoE Powered

Other features:

-Live scan: you can scan any frequencies from 15MHz to 2.7 GHz in real time.

-History page: you can go back in time to see if in a determinate period of time there was or was not a signal.

-Users: you can create different users with different roles and privileges.

SPECIFICATIONS

RF Analyzer

Frequency band coverage	15-2700 MHz.
Antenna connector	N-Female, 50 Ω
Amplitude resolution	0.5 dB
Dynamic range	-130 dBm to +10 dBm
Absolute Max input power	+30 dBm
Frequency stability and accuracy	\pm 10 ppm
Amplitude stability and accuracy	\pm 3 dB
Amplitude and Frequency calibration	Factory calibrated
Frequency resolution	1 KHz.
Resolution bandwidth (RBW)	Automatic 3KHz. to 600KHz.
Operating temperature	0°- 50° C

Power supply

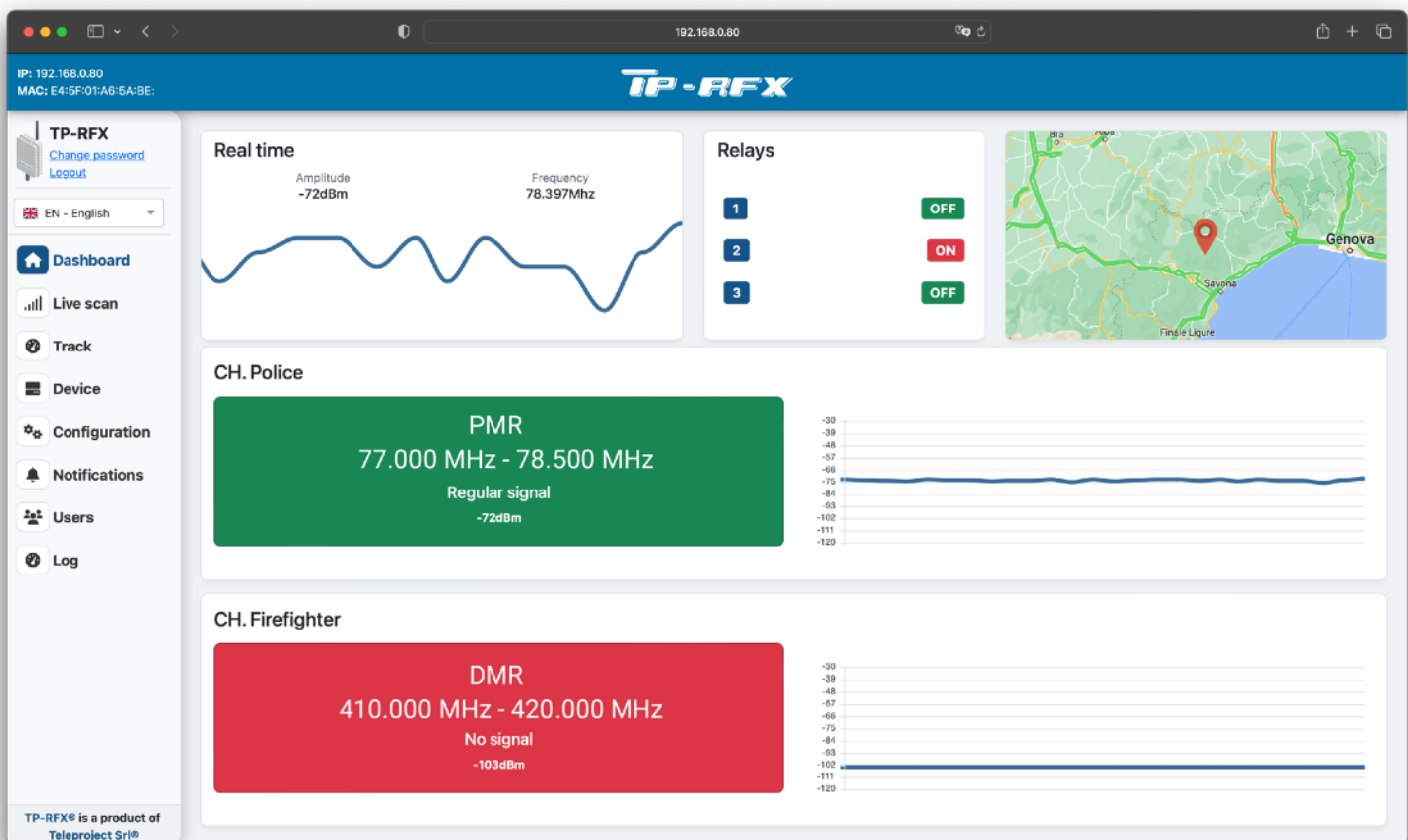
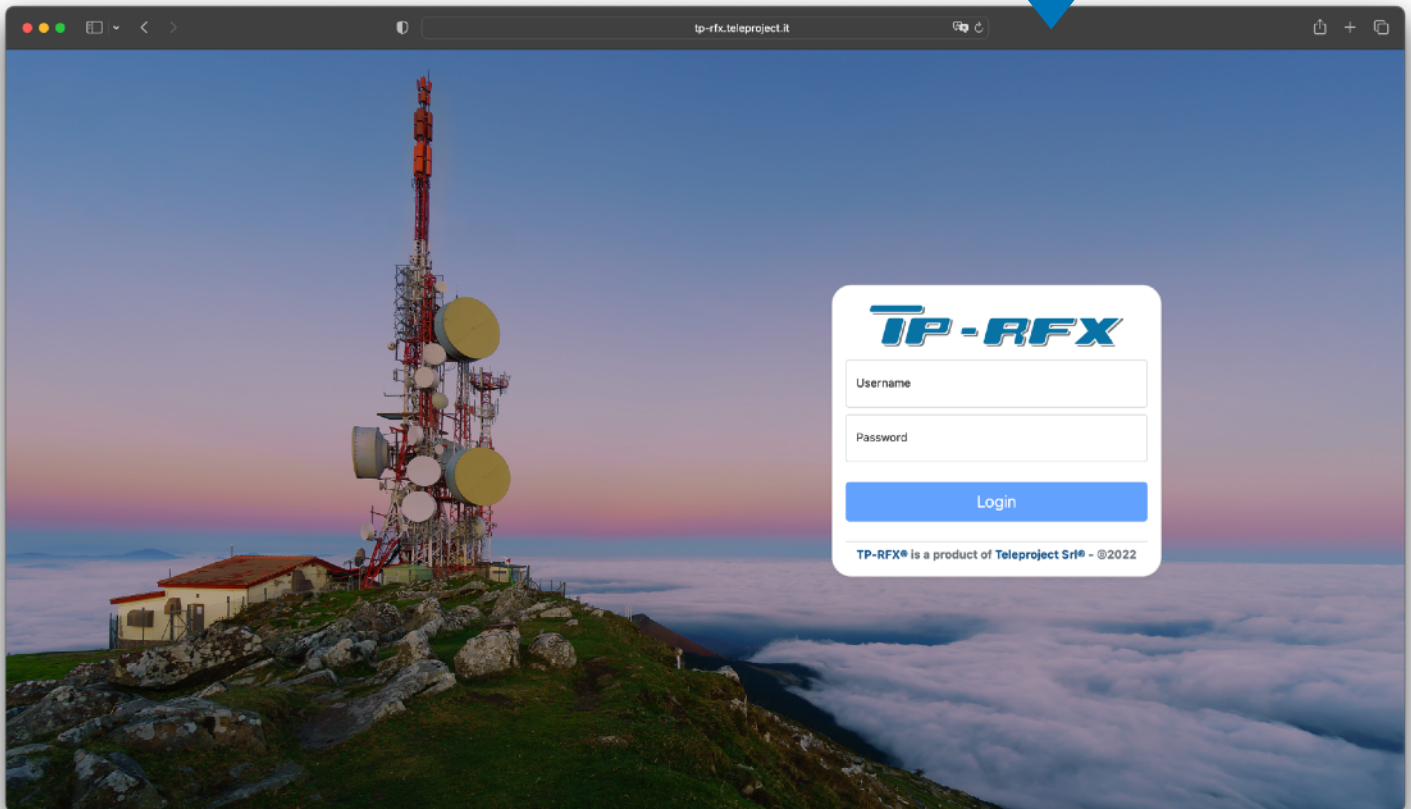
Input voltage (PoE power supply)	36-56 V
Operating voltage	5 V
Operating current	10-1300 mA
Max operating power	6.5 W
Protection	Overload and short circuit
Maximun distance from power supply	100 meters.

Case

Connectors	1 x RJ-45 PoE and 1 x N-Type female
Dimension (without connectors)	235 mm. x 155 mm. x 75 mm.
Weight	2 Kg.
Enclosure Seal Operating temperature:	-60° C to +230° C
Heat Trap:	+6.5° C under full sun (~100,000 Lux)
Wall thickness:	5 mm.
Temperature raise using a 5-10Watt heat source	+5.5° C

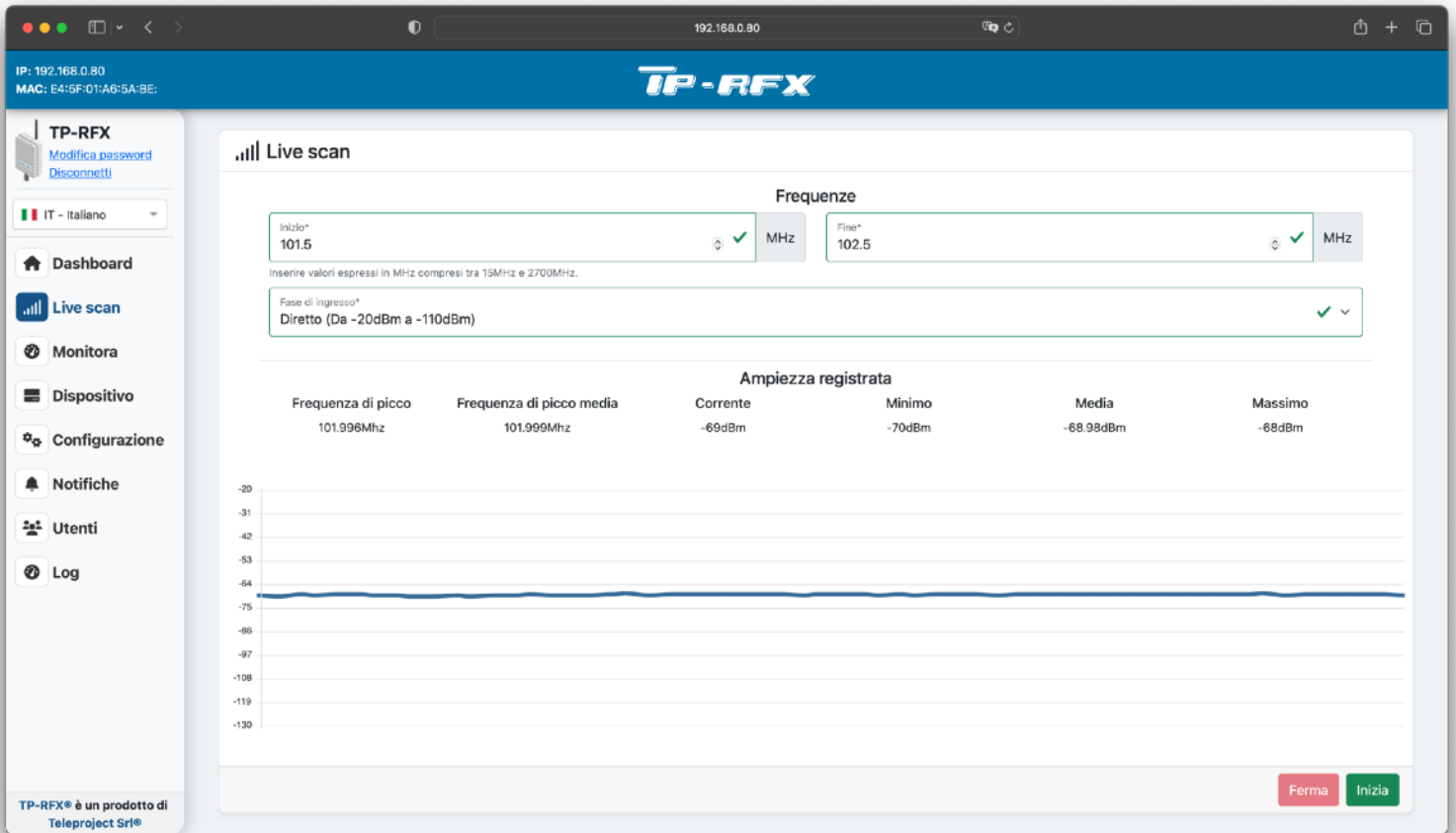
WEB INTERFACE

You can access the demo website at www.tp-rfx.teleproject.it
User: teleproject
Psw: teleproject



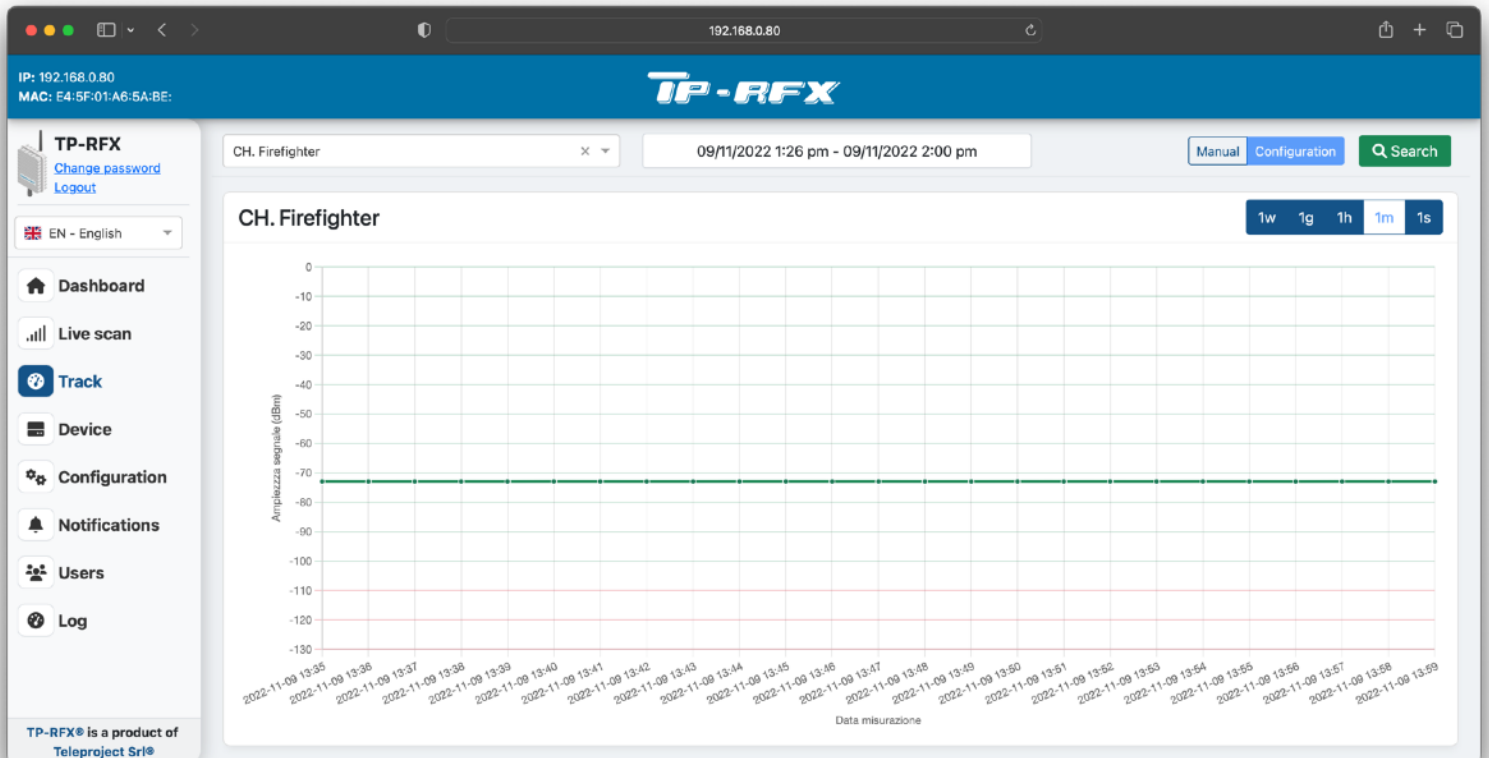
Live scan:

You can scan any frequencies from 15MHz to 2.7 GHz in real time



History page:

You can go back in time to see if in a determinate period of time there was or was not a signal



Device page:

You can modify, export and import the configuration of the device

The screenshot shows the TP-RFX web interface for the 'Device' page. The browser address bar shows the IP address 192.168.0.80. The page header includes the IP and MAC address (E4:5F:01:A6:5A:BE) and the TP-RFX logo. A left sidebar contains navigation options: TP-RFX (with links for Change password and Logout), Language (EN - English), Dashboard, Live scan, Track, Device (selected), Configuration, Notifications, Users, and Log. The main content area is divided into several sections: 1. Device information: Shows Device name (TP-RFX), Serial number (0109), Device location (Teleproject HQ), and MAC address (E4:5F:01:A6:5A:BE). 2. Network setting: Shows IP address (192.168.0.80), Subnet mask (255.255.255.0), and Default gateway (192.168.0.254). 3. Software details: Shows Dashboard version (1.1.0) and Analyzer version (1.1.0). 4. Configuration: Includes buttons for Export and Import. At the bottom left, it states 'TP-RFX® is a product of Teleproject Srl®'.

Configuration page:

All frequencies the analyzer is monitoring

The screenshot shows the TP-RFX web interface for the 'Configuration' page. The browser address bar shows the IP address 192.168.0.80. The page header includes the IP and MAC address (E4:5F:01:A6:5A:BE) and the TP-RFX logo. A left sidebar contains navigation options: TP-RFX (with links for Change password and Logout), Language (EN - English), Dashboard, Live scan, Track, Device, Configuration (selected), Notifications, Users, and Log. The main content area is titled '"|" Listening frequencies' and features buttons for Import, Export, Alert-Notifications timer (0s), + Add, and Reload. It displays three active channels: 1. CH. Police: Attivo, Transmitter location: La Spezia, Network, Input stage: Direct, Scan time: 20s, Type: PMR, Frequencies: Start: 77.000 MHz, End: 78.500 MHz, Alert level: Degraded signal: -90dBm, No signal: -100dBm, Relay number: Relay 2. 2. CH. Highway: Attivo, Transmitter location: La Spezia, Network, Input stage: Direct, Scan time: 20s, Type: DMR, Frequencies: Start: 168.100 MHz, End: 172.600 MHz, Alert level: Degraded signal: -90dBm, No signal: -100dBm, Relay number: Relay 3. 3. CH. Firefighter: Attivo, Transmitter location: La Spezia, Network, Input stage: Direct, Scan time: 20s, Type: DMR, Frequencies: Start: 410.000 MHz, End: 420.000 MHz, Alert level: Degraded signal: -90dBm, No signal: -110dBm, Relay number: No relay setted. Each channel card has buttons for Delete, Disable, Clone, and Edit.

TIP-RFX



Learn more at: www.teleproject.it
For more information on Teleproject products, applications or services,
please contact info@teleproject.it

Teleproject Srl, Via XXV Aprile snc, 19021, Arcola (SP), Italy. +39 0187 955205